



Oregon State University
Information and
Technology

IT STRATEGIC ROADMAP



FORWARD MOMENTUM

We are implementing IT Strategic Plan 2023 and launching into our first actions to validate and finalize our roadmap. After taking a hard look at the current state of IT with our partners and stakeholders, we have plotted our initial course and identified the priority actions that will lead us there.



OUR GRAND EXPEDITION

The greatest expeditions **challenge** us to adapt and excel. Our own journey to implement IT Strategic Plan 2023 is no different — it will take us places both familiar and foreign where we will plumb the deepest depths, discover nameless planets and reach the highest peaks in order to **empower** the OSU community to lead **vibrant**, digitally-empowered lives that will have a lasting, transformative impact at the university and **beyond**.



THEMES

The IT Strategic Roadmap is divided into four key themes that represent the different components of our expedition.

GOING DEEPER



VANTAGE POINT



NEXT-GEN THINKING



MISSION CONTROL

HIERARCHY

Each of our 10 key strategies maps to one of the broader themes within our IT Strategic Roadmap narrative. Our programs map to one (or more) of the key strategies.

THEME

STRATEGY

STRATEGY

PROGRAMS

PROGRAMS



VANTAGE POINT

The right perspective is everything in strategic thinking and data-driven decision making.



IMPACTS + STRATEGIES

PLOTTING OUR COURSE

Use a strong IT governance structure to align the IT enterprise with university goals and treat university communities equitably

MAPPING THE DATA LANDSCAPE

Build a robust and unified university data/information ecosystem that delivers data as a strategic working asset

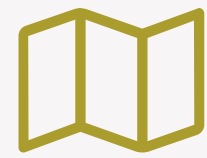


ENTERPRISE DATA ECOSYSTEM

MAPPING THE DATA LANDSCAPE

+ SAFEGUARDING OUR MISSION + PLOTTING OUR COURSE

Standardizing data across the university with an enterprise information ecosystem that allows for a collective understanding of our data and how to effectively utilize it, while respecting privacy and security



PROJECTS

- Data Management (MDM)
- Data Governance
- Data Architecture
- Data Security & Classification Model



ORGANIZATIONAL MATURITY

PLOTTING OUR COURSE + SAFEGUARDING OUR MISSION + WORKING SMARTER

Building the engagement models, capabilities, processes and measurements to increase efficiency and impact; using governance to focus funding and employee resources on key projects and deliverables; expanding the number of university staff with business analysis, process management and project management skills



PROJECTS

- Identify top business processes
- Stakeholder engagement/partnerships
- Establish Portfolio Management Office
- Establish governance practice
- Change management
- Migrate CoSine infrastructure and DRI
- Network upgrades
- Extension and Research site integration
- Disaster recovery
- End-to-end backup replacement



GOING DEEPER

It's time to expand on our existing capabilities and go deep on key, strategic efforts.



IMPACTS + STRATEGIES

BUILDING BETTER

Create a resilient, cloud-native, agile IT environment

WORKING SMARTER

Enhance and streamline the digital work experience



ADMINISTRATIVE MODERNIZATION PROGRAM (AMP)

BUILDING BETTER + WORKING SMARTER

Re-engineering core administrative HR, Student and Finance computing tools in the cloud to enable agility, resiliency and capability



PROJECTS

- Administrative workforce/resource ERP plan
- Migrate Banner to Oracle Cloud



ENTERPRISE SERVICE DELIVERY

WORKING SMARTER

+ TRANSFORMING THE LEARNER LANDSCAPE + ELEVATING OUR EDUCATORS

Simplifying access to the information, resources and training that faculty, students and employees need from IT and from the university; using personalization and automation to create seamless, intuitive online experiences



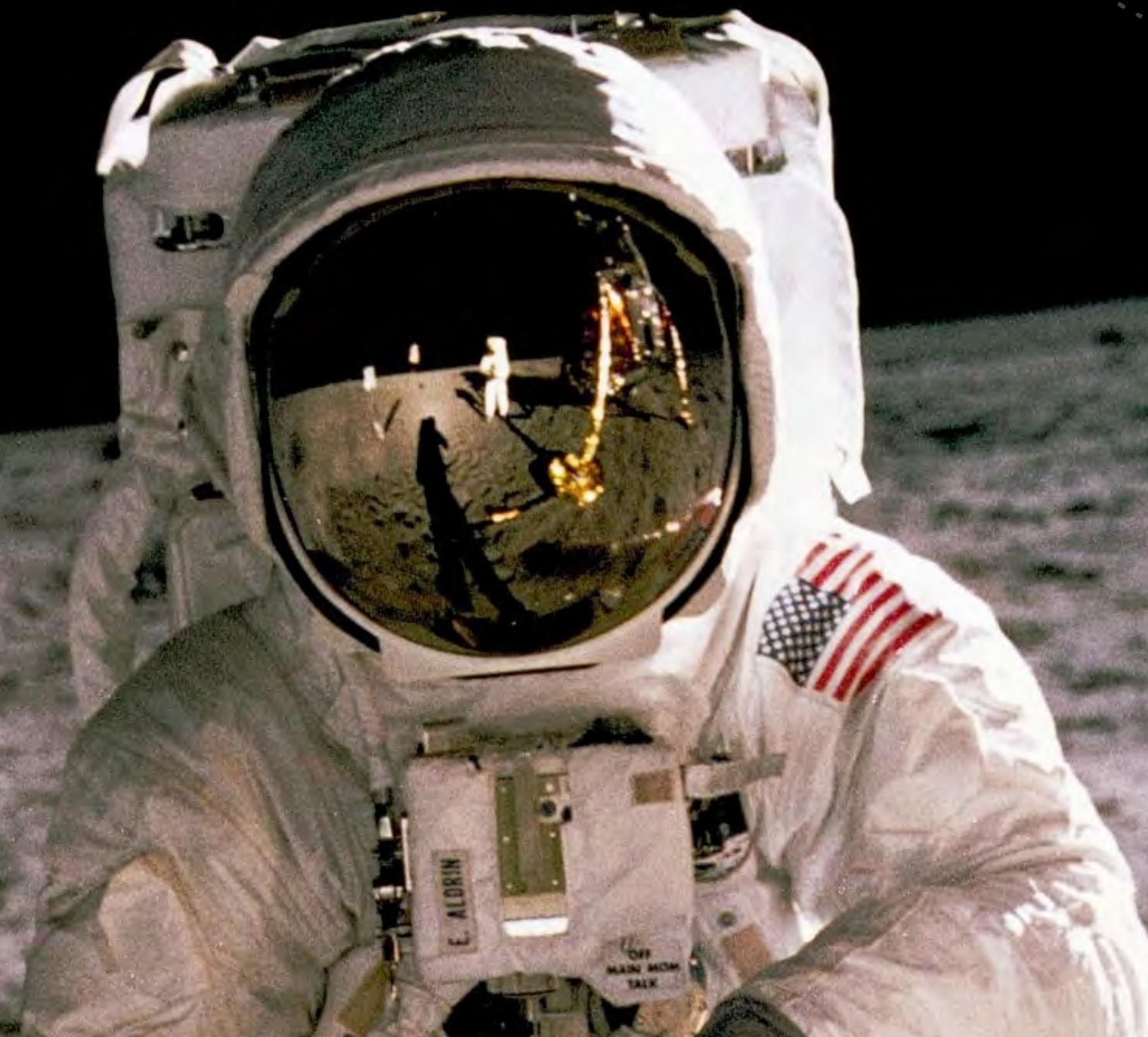
PROJECTS

- Enterprise service delivery technology platform
- Data extraction and integration management
- Contain and redesign Salesforce
- Contain and redesign Salesforce Marketing Cloud
- Marketing, training and communications for IT products and services
- Slate for professional schools
- Storage services simplification



NEXT-GENERATION THINKING

Innovating and embracing radical new paradigms within higher education and IT.





IMPACTS + STRATEGIES

TRANSFORMING THE LEARNER LANDSCAPE

Redesign students' encounters with the digital world at Oregon State University to make them personalized, accessible and equitable

ELEVATING OUR EDUCATORS

Empower faculty by providing the flexibility to teach effectively through diverse program models and student experiences

EXPLORING FURTHER

Implement an architected, easier-to-navigate, university-scale digital research ecosystem



LEARNING SPACES

TRANSFORMING THE LEARNING LANDSCAPE

+ ELEVATING OUR EDUCATORS

Investing in our physical and digital learning environments to enable new instructional paradigms and allow OSU to reach new learner populations



PROJECTS

- Implement Ally with Canvas
- Classroom upgrades and maintenance



RESEARCH REDESIGN

EXPLORE FURTHER

+ BUILDING BETTER + WORKING SMARTER

Improving OSU's research capabilities by providing more efficient digital processes for research administration, better support for IT in research labs, and campus-wide computing and storage services



PROJECTS

- Campus-scale computing and storage
- Digital research administration
- Lab services and access design



MISSION CONTROL

Investments in our people, practices and security efforts are the foundation that supports the rest of our initiatives.





IMPACTS + STRATEGIES

SAFEGUARDING OUR MISSION

Protect Oregon State University information assets and stakeholder privacy in line with university values

EQUIPPING OUR TEAM

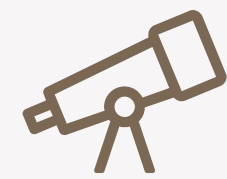
Develop a structured and formal program that promotes the capabilities, diversity and health of the Oregon State University IT community

TALENT MANAGEMENT

EQUIPPING OUR TEAM

+ BUILDING BETTER + TRANSFORMING THE LEARNER LANDSCAPE

Piloting a robust talent and performance evaluation practice that cultivates a diverse pool of IT talent and expands employee skills and knowledge



PROJECTS

- Performance management
- IT workforce development
- IT position profiles: portability assessment, minimal requirements
- GenderMag Systematizing
- Non-credit Learning Information System





SMART ACCESS

SAFEGUARDING OUR MISSION

+ BUILDING BETTER + MAPPING THE DATA LANDSCAPE

Implementing zero trust architecture and IT device management services that allow for more secure on- and off-campus access to university data and resources



PROJECTS

- Zero Trust Architecture
- Privacy program launch
- Security training and awareness program
- Server and device management



THANK YOU

